

alteme<sup>®</sup>



# **CILINDRO S**

A touch of elegance

# **CILINDRO S** THE FINEST QUALITY FOR A FLAWLESS FINISH

The CILINDRO S series of luminaires enables the light source to be perceived as visible or invisible light. A highly versatile solution for walls, recessed and surface-mounted ceiling fittings and pendant luminaires, the CILINDRO S series offers a wide range of options for creating highly perceptive lighting concepts. All the CILINDRO S models cut an impressive figure with their outstanding quality in terms of light, technology and the materials used.

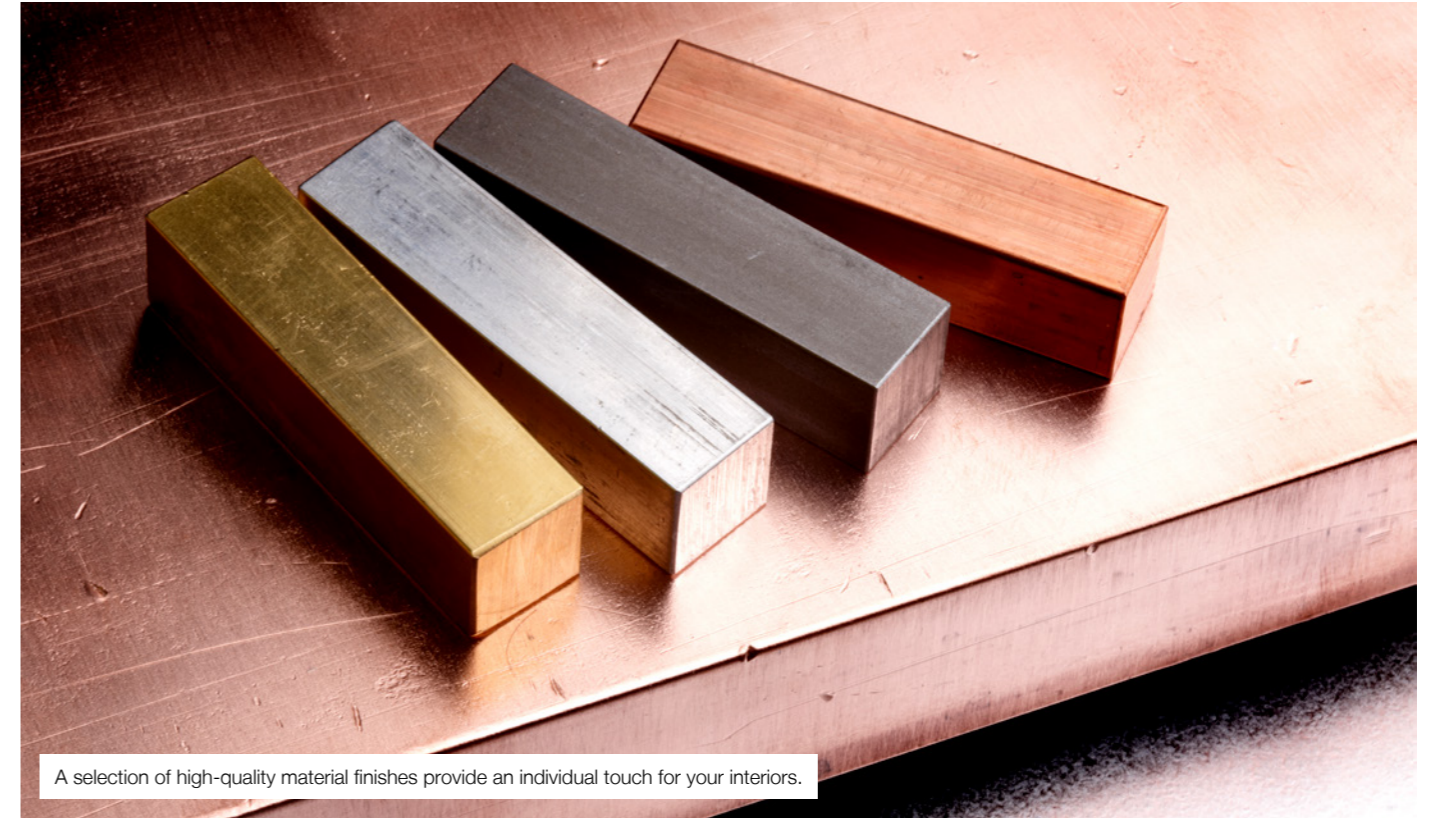


# INSPIRATION

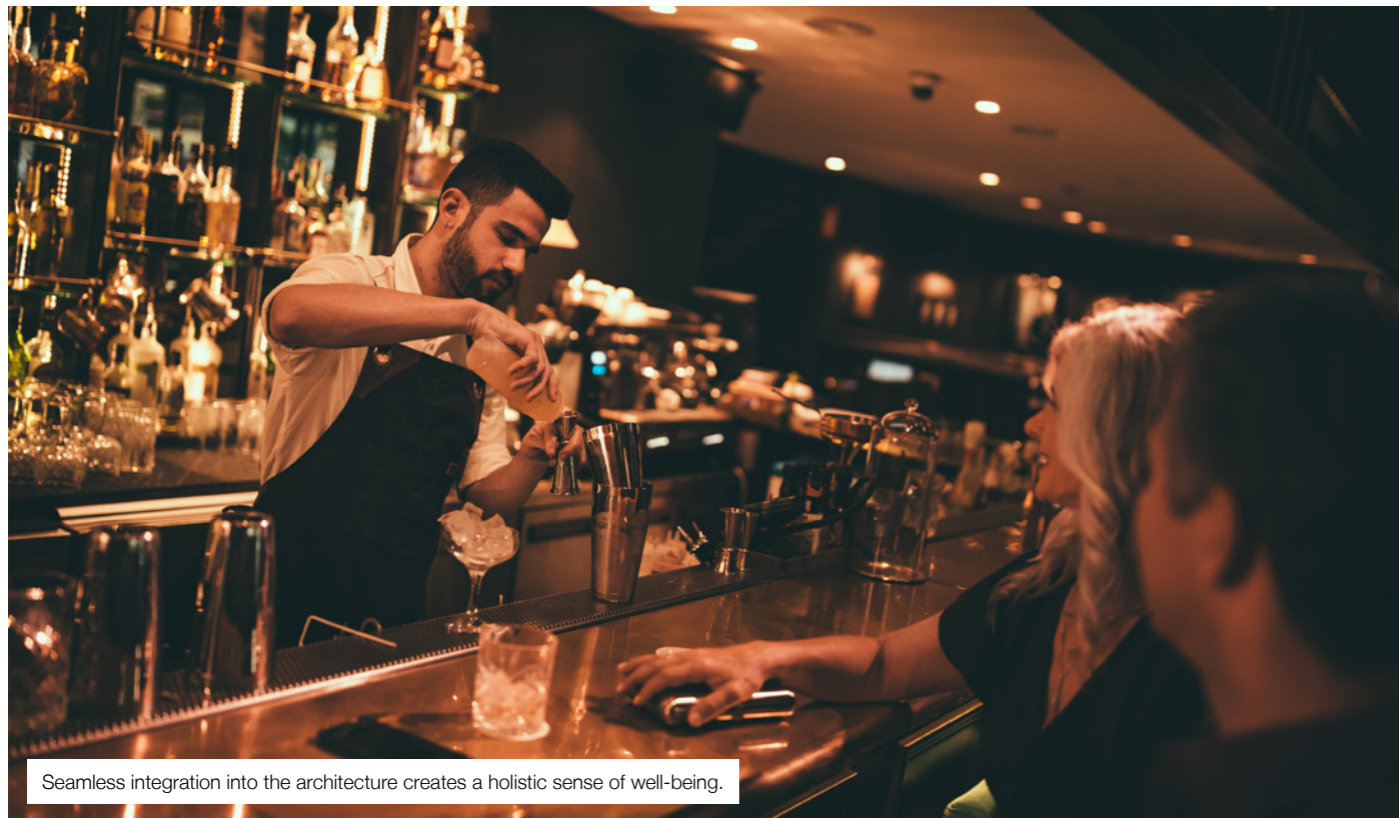
WE ALWAYS CONSIDER HOW THE TWO ELEMENTS, LIGHT AND MATERIAL, ARE PERCEIVED AS A WHOLE AND DEVELOP LUMINAIRES THAT OFFER ADDED VALUE IN QUALITATIVE TERMS WITH REGARD TO LIGHTING DESIGN.



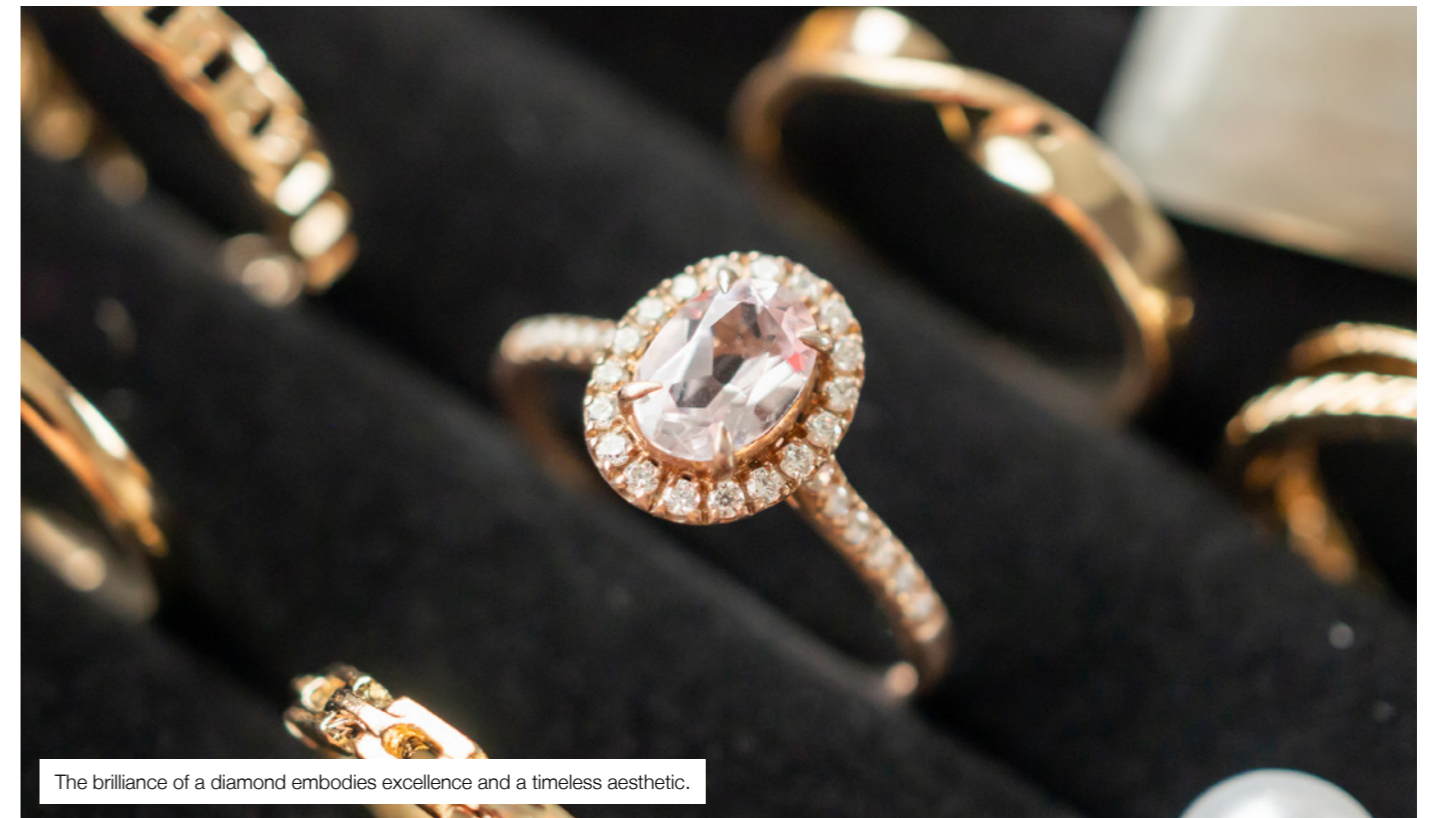
Elegant accents elevate a space and draw the eye to key features.



A selection of high-quality material finishes provide an individual touch for your interiors.



Seamless integration into the architecture creates a holistic sense of well-being.



The brilliance of a diamond embodies excellence and a timeless aesthetic.



# CONCEPT

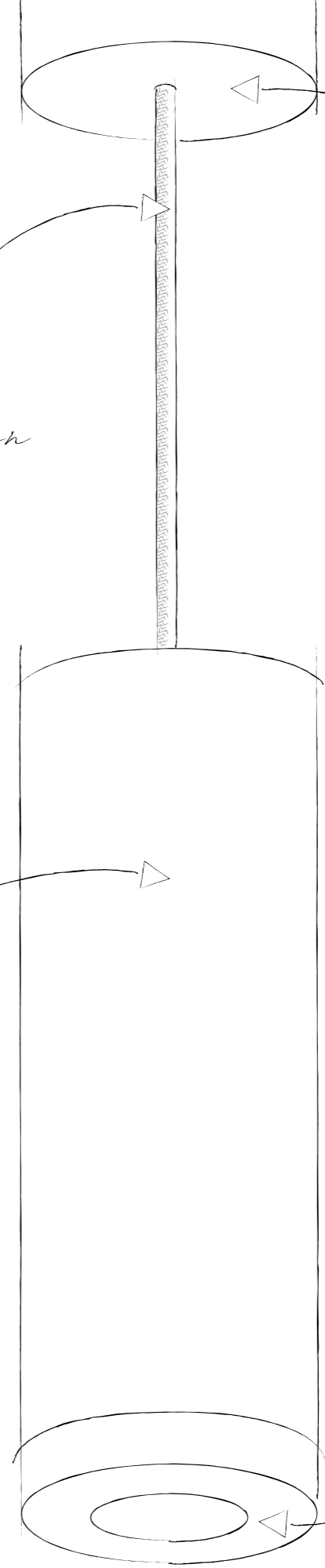
GENERAL LIGHTING, FUNCTIONAL LIGHTING AND ACCENT LIGHTING.  
OUR LUMINAIRES ARE ALWAYS DESIGNED WITH THE NEEDS OF PERCEPTIVE LIGHTING PLANNING IN MIND.



*Streamlined form for diverse integration options*

*High-grade LED technology for maximum lighting quality*

*High-gloss anti-dazzle cone for a glare-free darklight effect*



*High quality textile cable can be adjusted without tools*

*Elegant round canopy with integrated adapter*

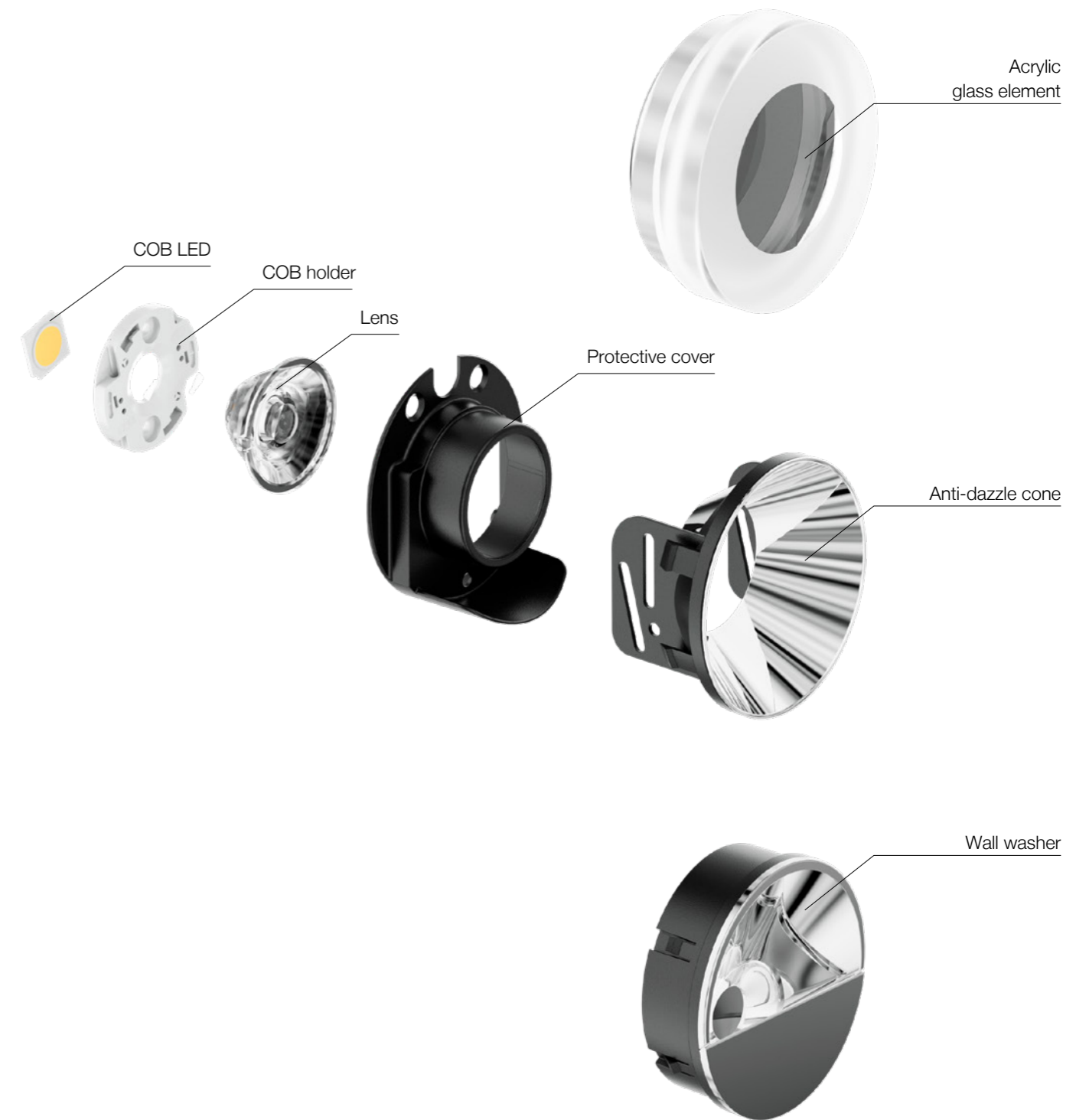
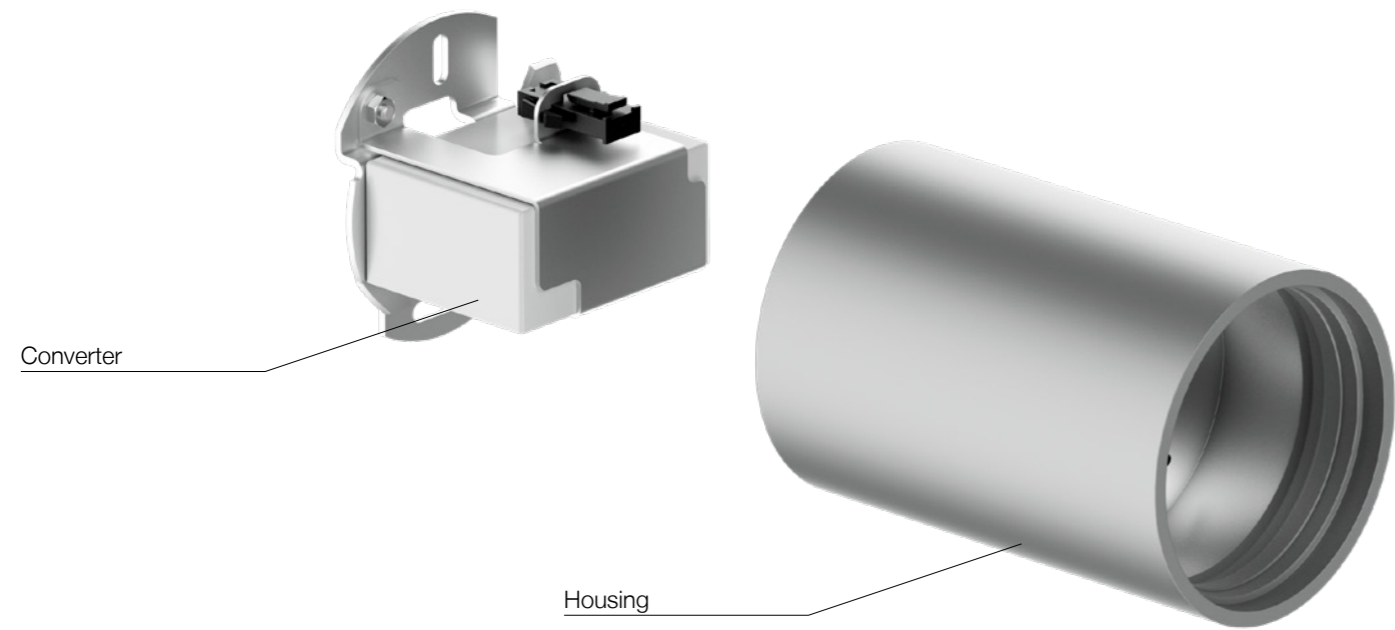
*Integrated strain relief for precise height adjustment*

*Acrylic glass variant for visible light*

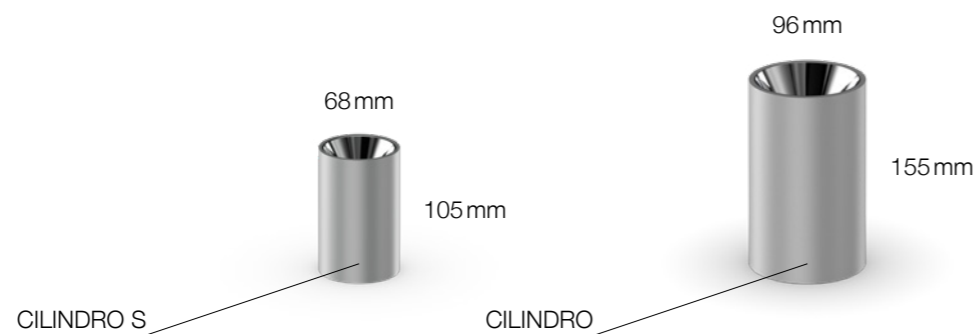
# PRESENTATION

IDEAL FOR PERSONALISED USE IN YOUR ARCHITECTURE THANKS TO THE UNDERSTATED DESIGN COMBINED WITH DIVERSE APPLICATION AND CONFIGURATION OPTIONS.





The elegant and understated design of the CILINDRO S houses three integrated lighting technologies. Numerous lighting options are possible thanks to the combination of the darklight with anti-dazzle cone, Viewlight with acrylic glass element and the wall washer. The smart design ensures seamless installation. Thanks to a high-performance LED element in combination with a high-grade PMMA lens, CILINDRO S generates specific lighting effects for a high-end ambience. A seamless combination of advanced technology and attractive design with the smallest form factor, which has a diameter of just 68mm – around 30 per cent smaller than our CILINDRO model.





# APPLICATION

WITH OUR LIGHTING SOLUTIONS, WE ALWAYS OFFER ADDED VALUE FOR PEOPLE AND ARCHITECTURE ALIKE

## USAGE EXAMPLE

Example situation with CILINDRO S





USAGE EXAMPLE  
Example situation with CILINDRO S





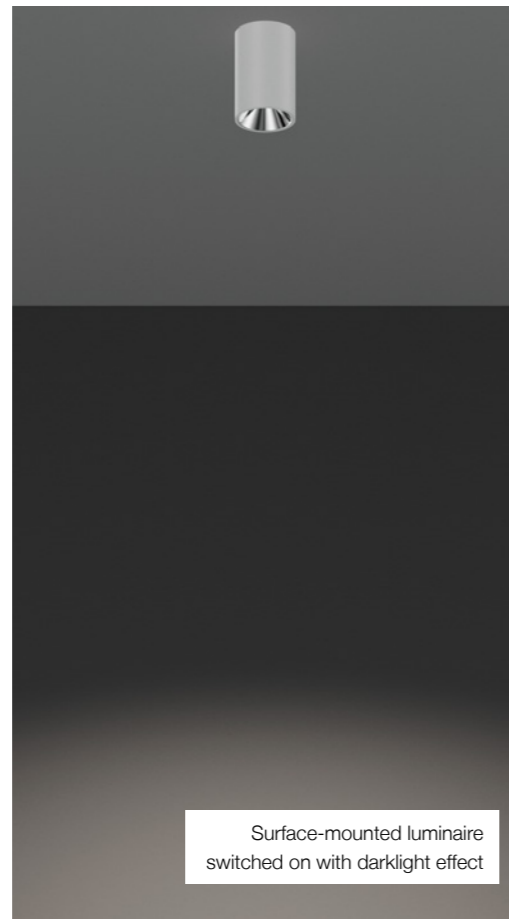
# FEATURES & BENEFITS

## DARKLIGHT – THE LIGHT SOURCE WITH NO VISIBLE LIGHT

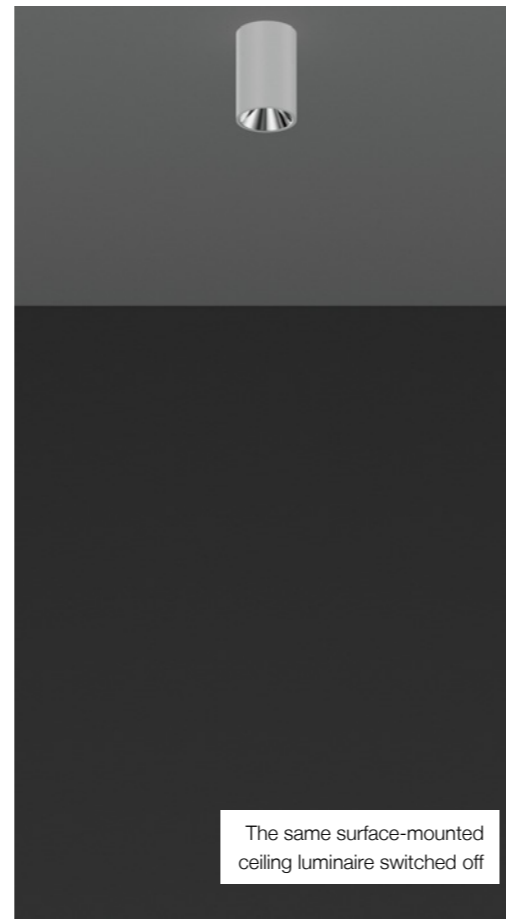
All CILINDRO S luminaires with darklight technology are equipped with an anti-dazzle cone. With this technology, the light source is recessed in the luminaire housing, which improves the shielding angle for the viewer. In addition, a highly reflective coating ensures that only low luminance levels are visible on the anti-dazzle cone. This principle means that the lighting tools primarily work as they should do, discreetly remaining in the background. The light emitted by the LED is not affected by the anti-dazzle cone. This means that specific colour variants can be chosen for the product without any impact on the colour temperature of the light.



CILINDRO S wall luminaire with darklight effect



Surface-mounted luminaire switched on with darklight effect

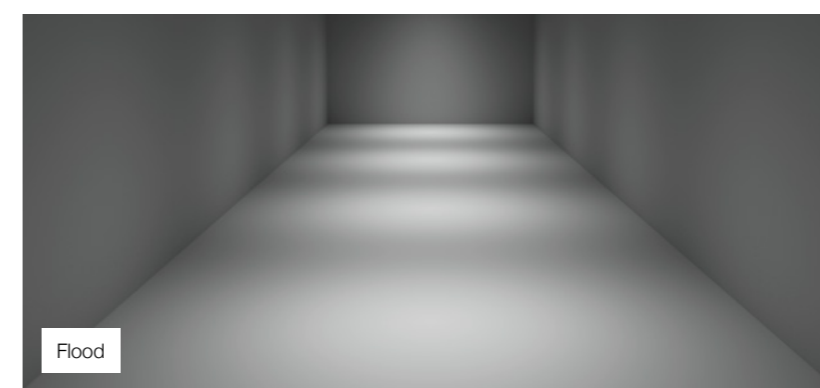
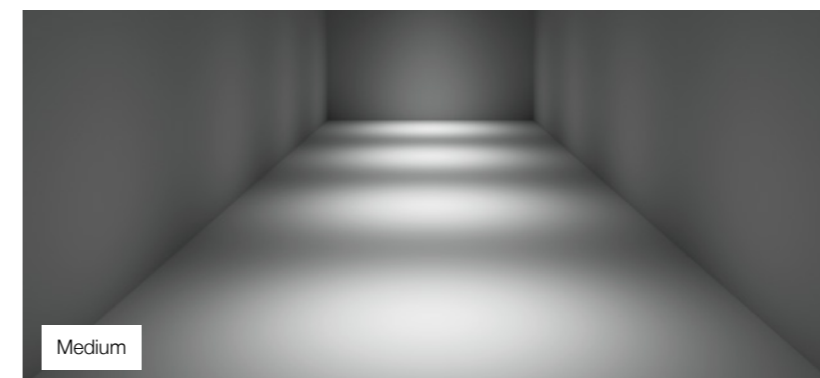
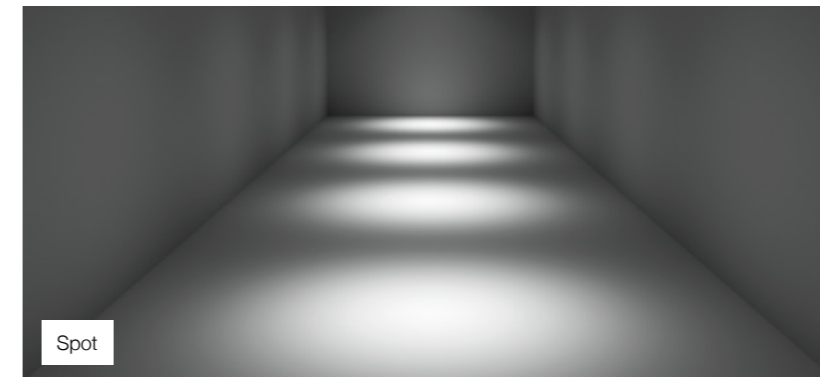


The same surface-mounted ceiling luminaire switched off



## A VARIETY OF SELECTABLE LIGHT EFFECTS

Experience a variety of fascinating lighting effects with CILINDRO S. The high-quality PMMA lens with prismatic embossing directs the light emitted by the LED to precisely where it needs to be in the space. You achieve impressive, precise illumination which helps your spaces shine. Homogeneously illuminated walls are possible with the wallwasher option.





## VIEWLIGHT – THE VISIBLE LIGHT

The acrylic glass element gives the light from CILINDRO S a physical presence. A partial coating on the underside of the element ensures that it is lit without causing irritating glare. Depending on the perspective, observers repeatedly encounter different views and perceptions. If the acrylic glass element is viewed at a flat angle, it appears almost transparent; the light scattering at the edges is its only distinguishing feature. Viewed from a steeper angle, the grooves in the element become visible, creating an interesting interplay between light and shadow. As more light is emitted on the underside, the presentation of illuminated surfaces is enhanced.



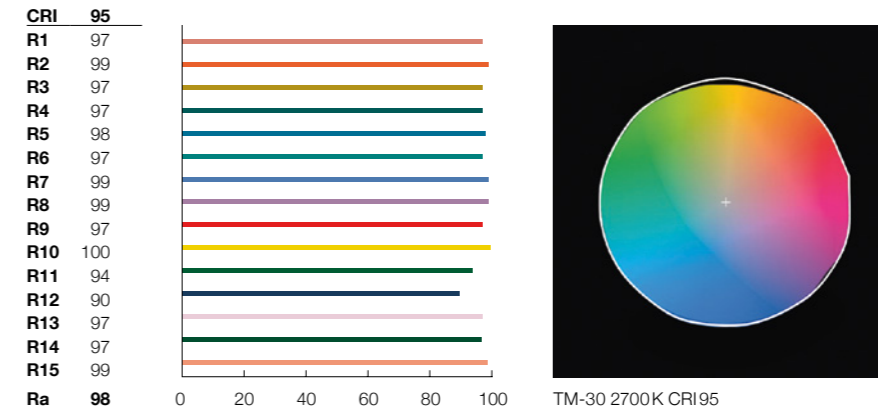


## LIGHT QUALITY – LIGHT COMES FIRST

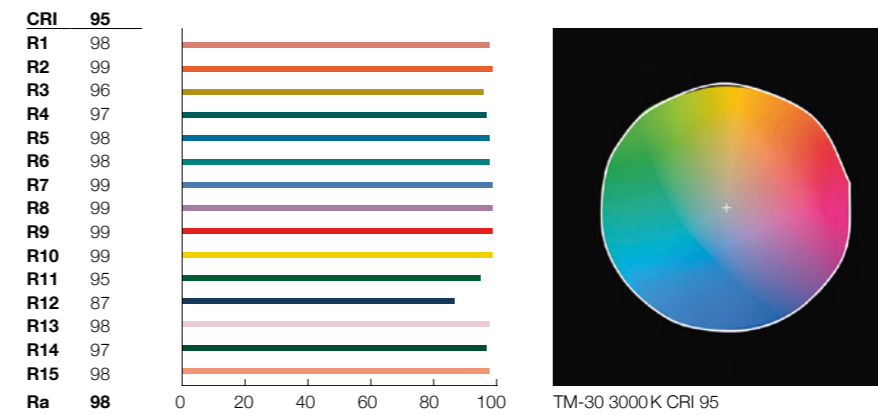
CILINDRO S only uses the highest-quality LEDs. The narrow classification (referred to as “LED binning”) of the “initial 2-step MacAdam” achieves first-class colour consistency with barely any noticeable differences in colour. The high colour rendering of up to  $\text{CRI} \geq 95$  and the balanced TM-30 spectrum gives all the colours a natural and rich appearance. CILINDRO S also naturally renders the red tones that are difficult to produce with traditional LEDs ( $\text{R9} \geq 97$  at 2700K,  $\text{R9} \geq 99$  at 3000 K and  $\text{R9} \geq 92$  at 4000 K).



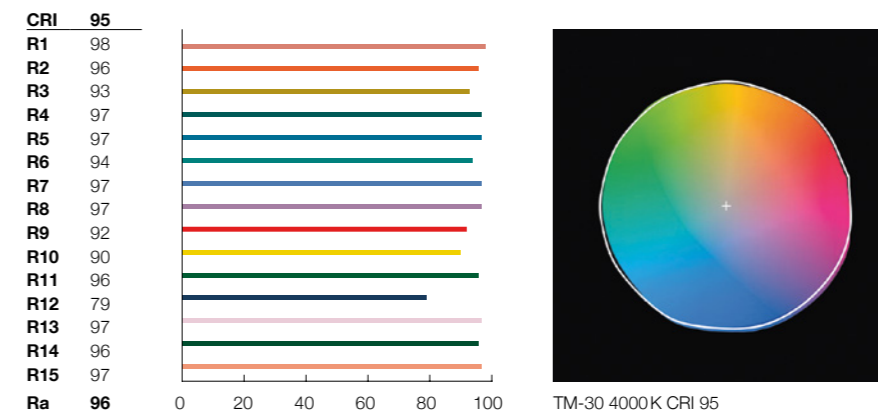
### 2700 K COLOUR RENDERING



### 3000 K COLOUR RENDERING



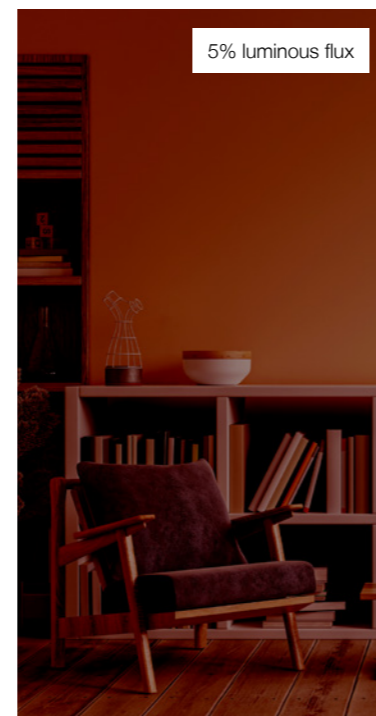
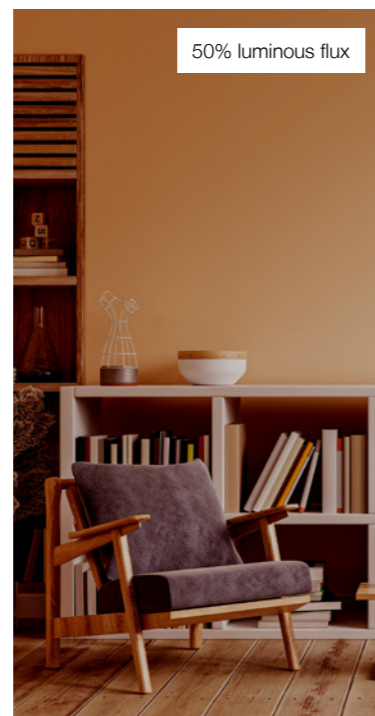
### 4000 K COLOUR RENDERING





## COZI – ACHIEVE COSINESS BY SHIFTING THE COLOUR TEMPERATURE THROUGHOUT THE DIMMING RANGE

Having the right colour temperature is essential for a cosy atmosphere in any room. CILINDRO S COZI follows the example of a thermal radiator, shifting the colour temperature across the entire dimming range, from 2700 K at full light output to 1800 K at 1% of the maximum luminous flux – a cooler colour temperature at a high luminous intensity, and a cosy and warm colour temperature at a low luminous intensity.





# MATERIALS

CLOTHES MAKE THE MAN – MATERIALS AND FINISHES MAKE THE OBJECT

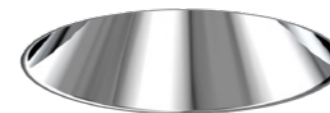
## LUMINAIRE COLOURS

The standard versions in the colours white, silver and black blend discreetly into modern architecture. The light effect is therefore left to take centre stage, as the saying goes. The high-quality appearance of the CILINDRO S is also reflected in details such as the high-quality textile cable in the pendant versions.

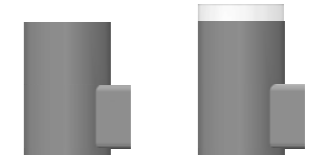
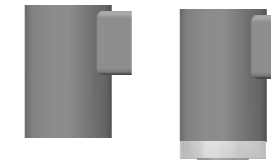
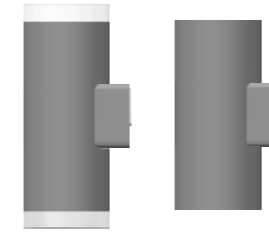
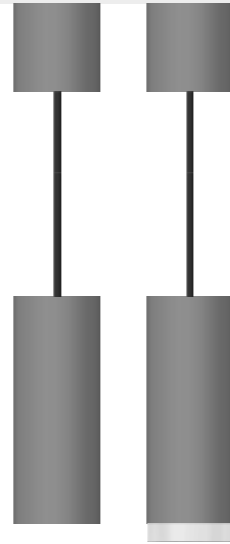
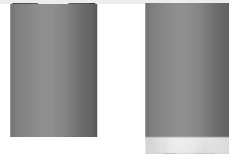
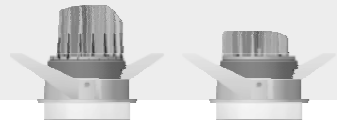


## SPECIAL FINISHES

The optional special finishes for the anti-glare cone or the housing make CILINDRO S an eye-catcher in its own right, offering exciting possibilities for a contemporary interior design. There are countless possible combinations for a very personal touch. We are also happy to offer completely individual colour variants on request.







# MODEL OVERVIEW

Types	Versions	Designs	Colour temperature
Recessed luminaire ETA	Viewlight	white	2700K/3000K/4000K/COZI
Recessed luminaire FORTIS	Viewlight	white	2700K/3000K/4000K/COZI
Surface-mounted luminaire	Darklight	white/silver/black	2700K/3000K/4000K/COZI
Surface-mounted luminaire	Viewlight	white/silver/black	2700K/3000K/4000K/COZI
Surface-mounted luminaire	Wall washer	white/silver/black	2700K/3000K/4000K/COZI
Wall luminaire two-sided	Darklight	white/silver/black	2700K/3000K/4000K
Wall luminaire two-sided	Viewlight	white/silver/black	2700K/3000K/4000K
Wall luminaire one-sided	Darklight	white/silver/black	2700K/3000K/4000K
Wall luminaire one-sided	Viewlight	white/silver/black	2700K/3000K/4000K
Pendant luminaire	Darklight	white/silver/black	2700K/3000K/4000K/COZI
Pendant luminaire	Viewlight	white/silver/black	2700K/3000K/4000K/COZI

CRI	Beam angle	Activation	Page
CRI ≥ 95	-	DALI-2	28
CRI ≥ 95	-	DALI-2	28
CRI ≥ 95	29°/39°/46°, COZI: 31°/36°	DALI-2	29
CRI ≥ 95	-	DALI-2	29
CRI ≥ 95	-	DALI-2	29
CRI ≥ 95	29°/29°/29° 46°/46° 46°	DALI-2	30
CRI ≥ 95	-	DALI-2	30
CRI ≥ 95	29°/46°	DALI-2	31
CRI ≥ 95	-	DALI-2	31
CRI ≥ 95	29°/39°/46°, COZI: 31°/36°	DALI-2	32
CRI ≥ 95	-	DALI-2	32





# CILINDRO S

## RECESSED LUMINAIRE

COB Light Engine LED with a high level of colour consistency (2 SDCM initial) and high colour rendering (CRI ≥ 95). Choice of colour temperatures in a single colour: 2700 K, 3000 K and 4000 K or COZI: 1800 K to 2700 K dimming range, cylindrical aluminium luminaire body, CNC-machined, with light emission on one side. PMMA collimator for light direction and LED contact protection. Primary reflector and homogenising lens. Acrylic glass element polished to a high gloss and part-burnished, recessed ring with flat springs and plastic flange in traffic white RAL 9016. Direct installation in ceiling cut-out of Ø 68 mm. DALI-2 operating device with tool-free connector, secondary circuit. 2 packing units.



Colour temperatures	2700K/3000K/4000K/COZI
Colour rendering	CRI ≥ 95
Half-value angles	-
Preservation of luminous flux	L80/B10 50000h
Net luminous flux	200lm-950lm
Colour consistency	2 SDCM
Efficiency	95-130lm/W



Scan the QR code or click to find out more about this family of luminaires at [alteme.ch/en](http://alteme.ch/en)



# CILINDRO S

## MOUNTED LUMINAIRE AND WALL WASHER

COB Light Engine LED with a high level of colour consistency (2 SDCM initial) and high colour rendering (CRI ≥ 95). Choice of colour temperatures in a single colour: 2700 K, 3000 K and 4000 K or COZI: 1800 K to 2700 K dimming range, cylindrical aluminium luminaire body, CNC-machined and painted traffic white RAL 9016, white aluminum RAL 9006 or jet black RAL 9005, with light emission on one side. PMMA collimator or diffusion foil for light direction and touch protection for the LED primary reflector and homogenising lens. Acrylic glass element polished to a high gloss and part-burnished, or darklight anti-dazzle cone made from plastic, with a high-gloss (vaporised) aluminium finish, a colourless scratch-resistant protective coating and shielding angle 28°. Half-value angle 29°/39°/46° for a single colour; 31°/36° for COZI. For surface-mounted ceiling installation. DALI-2 operating device with tool-free connector, secondary circuit. 1 packing unit. Order accessories separately.

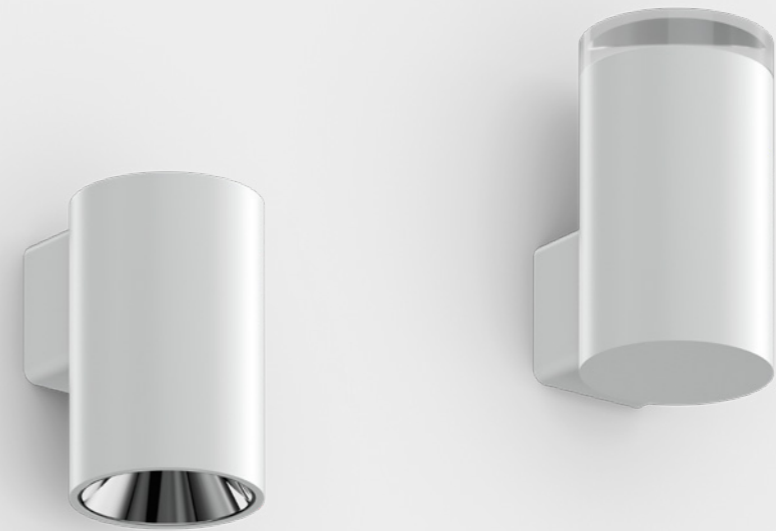


Colour temperatures	2700K/3000K/4000K/COZI
Colour rendering	CRI ≥ 95
Half-value angles	29°/39°/46°, COZI: 31°/36°
Preservation of luminous flux	L80/B10 50000h
Net luminous flux	200lm-950lm
Colour consistency	2 SDCM
Efficiency	95-130lm/W



Scan the QR code or click to find out more about this family of luminaires at [alteme.ch/en](http://alteme.ch/en)





# CILINDRO S

## WALL LUMINAIRE TWO-SIDED

COB Light Engine LED with a high level of colour consistency (2 SDCM initial) and high colour rendering (CRI ≥ 95). Colour temperatures in a choice of 2700 K, 3000 K or 4000 K. Cylindrical aluminium luminaire body, CNC-machined and painted traffic white RAL 9016, white aluminum RAL 9006 or jet black RAL 9005, with light emission on two sides. PMMA collimator for light direction and LED contact protection. Primary reflector and homogenising lens. Acrylic glass element polished to a high gloss and part-burnished, or darklight anti-dazzle cone made from plastic, with a high-gloss (vaporised) aluminium finish, a colourless scratch-resistant protective coating and shielding angle 28°. Half-value angle (29°/29°)/(29°/46°)/(46°/46°) for a single colour. For wall-mounted installation. DALI-2 operating device with tool-free connector, secondary circuit. 1 packing unit.



Colour temperatures	2700K/3000K/4000K
Colour rendering	CRI ≥ 95
Half-value angles	29°/29°/29° 46°/46° 46°
Preservation of luminous flux	L80/B10 50000h
Net luminous flux	200lm–950lm
Colour consistency	2 SDCM
Efficiency	95–130lm/W



Scan the QR code or click to find out more about this family of luminaires at [alteme.ch/en](http://alteme.ch/en)

# CILINDRO S

## WALL LUMINAIRE ONE-SIDED

COB Light Engine LED with a high level of colour consistency (2 SDCM initial) and high colour rendering (CRI ≥ 95). Colour temperatures in a choice of 2700 K, 3000 K or 4000 K. Cylindrical aluminium luminaire body, CNC-machined and painted traffic white RAL 9016, white aluminum RAL 9006 or jet black RAL 9005, with light emission on one side. PMMA collimator for light direction and LED contact protection. Primary reflector and homogenising lens. Acrylic glass element polished to a high gloss and part-burnished, or darklight anti-dazzle cone made from plastic, with a high-gloss (vaporised) aluminium finish, a colourless scratch-resistant protective coating and shielding angle 28°. Half-value angle 29°/46° for a single colour. For wall-mounted installation. DALI-2 operating device with tool-free connector, secondary circuit. 1 packing unit.



Colour temperatures	2700K/3000K/4000K
Colour rendering	CRI ≥ 95
Half-value angles	29°/46°
Preservation of luminous flux	L80/B10 50000h
Net luminous flux	200lm–950lm
Colour consistency	2 SDCM
Efficiency	95–130lm/W



Scan the QR code or click to find out more about this family of luminaires at [alteme.ch/en](http://alteme.ch/en)





# CILINDRO S

## PENDANT LUMINAIRE

COB Light Engine LED with a high level of colour consistency (2 SDCM initial) and high colour rendering (CRI  $\geq$  95). Choice of colour temperatures in a single colour: 2700 K, 3000 K and 4000 K or COZI: 1800 K to 2700 K dimming range, cylindrical aluminium luminaire body and canopy, CNC-machined and painted traffic white RAL 9016, white aluminum RAL 9006 or jet black RAL 9005, with light emission on one side. PMMA collimator for light direction and LED contact protection. Primary reflector and homogenising lens. Acrylic glass element polished to a high gloss and part-burnished, or darklight anti-dazzle cone made from plastic, with a high-gloss (vaporised) aluminium finish, a colourless scratch-resistant protective coating and shielding angle 28°. Half-value angle 29°/39°/46° for a single colour; 31°/36° for COZI. For surface-mounted ceiling installation. DALI-2 operating device with tool-free connector, secondary circuit. 1 packing unit. Order accessories separately.



Colour temperatures	2700 K/3000 K/4000 K/COZI
Colour rendering	CRI $\geq$ 95
Half-value angles	29°/39°/46°, COZI: 31°/36°
Preservation of luminous flux	L80/B10 50000 h
Net luminous flux	200lm–950lm
Colour consistency	2 SDCM
Efficiency	95–130lm/W

# INTERESTED?

## CONTACT US WITH NO OBLIGATION

Visit [alteme.ch](http://alteme.ch) for further technical information on our products and to contact us directly for advice and purchasing



Scan the QR code or click to visit [alteme.ch](http://alteme.ch) and contact us with no obligation



Scan the QR code or click to find out more about this family of luminaires at [alteme.ch/en](http://alteme.ch/en)



# GENERAL NOTES

## GENERAL INFORMATION

---

We reserve the right to make technical and design changes to our products owing to new technical developments. The images and descriptions reflect the products as they were when this luminaire brochure went to print. Errors are reserved. We would be happy to provide up-to-date documents on request.

All dimensions are given in millimetres.

Where available, the photometric data can be found in the corresponding light distribution curves.

## SYMBOLS AND ACRONYMS

---



Swiss quality product made in Aarau



Only for use indoors



Protection against the ingress of solid foreign bodies measuring more than 12 mm in diameter



Luminaires in protective class I – with protective earth terminal



Luminaires in protective class II



LED lamps can be replaced at the factory



Dimmable ballast in accordance with the DALI-2 standard



Meets the requirements for office workspaces in accordance with the relevant standard



Warmdim-LED with colour temperature shift when dimming from 2700K at 100% to 1800K at 1%



Diameter of the ceiling cut-out

## TECHNICAL AND ABBREVIATIONS

---

$\Phi$  Ng [lm]  
Total net luminous flux

CCT  
Colour temperature (in Kelvin)

CRI  
Colour rendering index

FWHM  
Half-value angle

lm  
luminous flux (lumen)

DA  
ceiling cut-out

